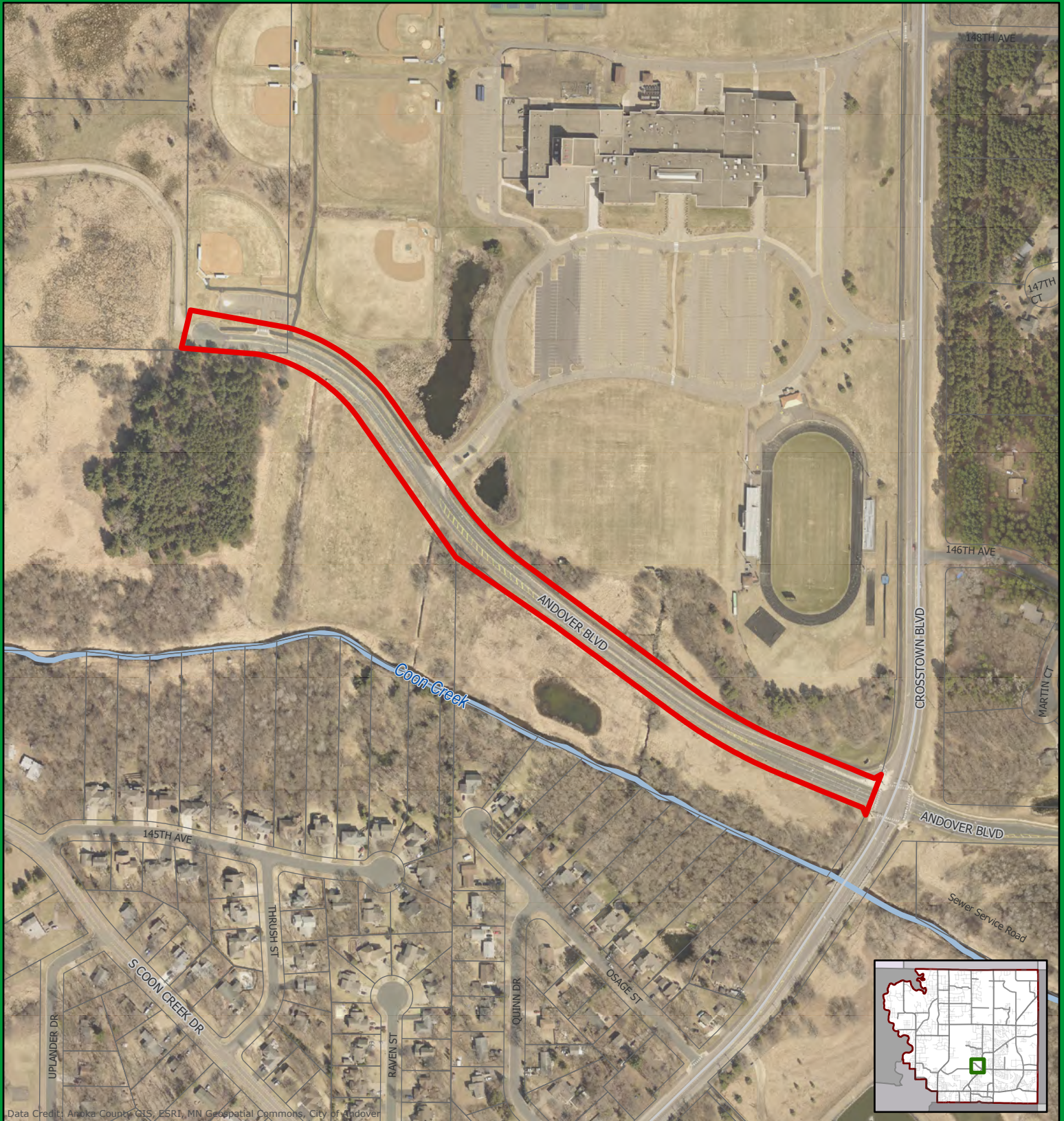




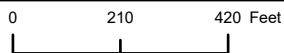
# CAPITAL IMPROVEMENT PLAN

(2023)


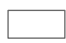

PROJECT NAME: STATE AID ROUTES / MILL & OVERLAY  
LOCATION: ANDOVER BLVD (WEST OF CROSTOWN BLVD)



Data Credits: Anoka County GIS, ESRI, MN Geospatial Commons, City of Andover



This map is intended for reference purposes only with mapping grade accuracy of the data. The City of Andover does not make claim that the features depicted represent true locations; therefore the City assumes no liability for any errors or omissions herein.

-  Project Location
-  Parcel Boundary
-  City Limits

