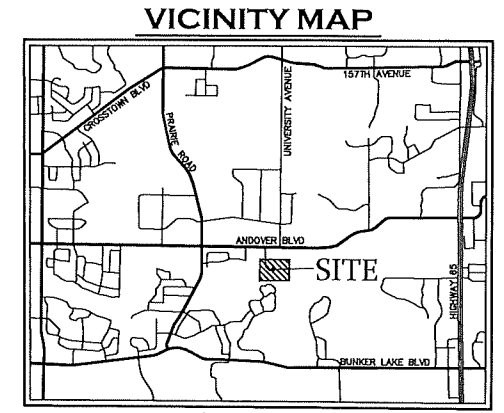


SHADOWBROOK NORTH

ANDOVER, MINNESOTA

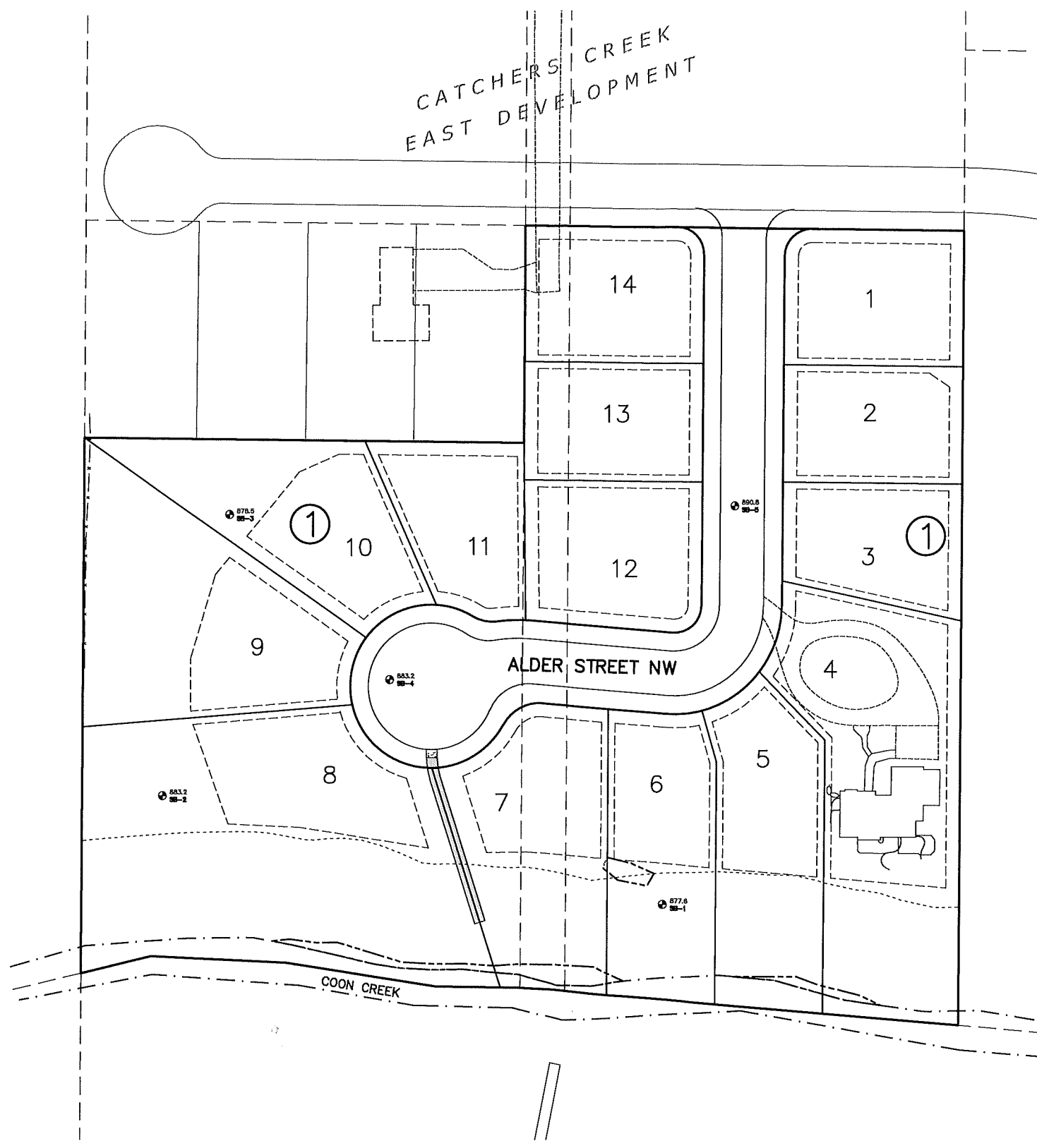


NOT TO SCALE

APPROVED
 7/15/19
 (Date) *Stephan*
 City Planner
 City of Andover

CATCHERS CREEK
 EAST DEVELOPMENT

APPROVED
 CITY OF ANDOVER
 7/15/19
 (Date) *Jan*
 Mayor



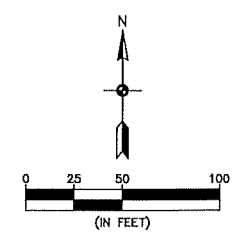
SHEET INDEX

1. COVER
2. EXISTING CONDITIONS
3. PRELIMINARY PLAT
4. REMOVALS PLAN
5. PRELIMINARY SITE & UTILITY PLAN
6. PRELIMINARY GRADING & EROSION CONTROL PLAN
7. WETLAND & FLOODPLAIN IMPACTS
8. TREE PRESERVATION PLAN
- 9-11. DETAILS

RECEIVED

JUN 17 2019

CITY OF ANDOVER



BENCHMARK	
1.	Anoka County Benchmark No. 2037, Brass Cap in the Southeast bridge abutment over Coon Creek. Elev.= 885.60
2.	Anoka County Benchmark No. 2075, 65 feet easterly of the centerline of Profile Road and 50 feet northerly of the centerline of Co. Rd. No. 16. Elev.= 903.09

CALL BEFORE YOU DIG

Know what's below.
Call before you dig.

The subsurface utility information shown on this plan is utility Quality Level D. This quality level was determined according to the guidelines of CI/ASCE 38-02, entitled "Standard Guideline for the Collection and Depiction of Existing Subsurface Utility Data."